

# MINNESOTA DFL VOTER PROTECTION

## Time Off Work to Vote

*You have a right to take time off work to vote without losing your pay, personal leave, or vacation time.*

Your employer must pay you for the time you need to vote if it falls within your scheduled work time. Your employer cannot require you to use personal leave or vacation time. Take only as much time as you need to vote and go to work. Your employer cannot directly or indirectly refuse, limit, or interfere with this right, including what time you choose to vote. Your employer can ask that you tell them when you will be gone, and ask that employees coordinate their absences to minimize workplace disruptions. You have the right to time off work to vote in all state and federal elections, and in all regularly scheduled local elections.

### COMPLAINTS

An employer that violates this law is guilty of a **misdemeanor**. Any complaints from employees should be filed with the county attorney

### VOTE EARLY WITH AN ABSENTEE BALLOT

You can vote early if you do not want to or cannot vote on Election Day. You can vote early with an absentee ballot at your local elections office. You can also request to have an absentee ballot sent to you in the mail. To find your local elections office or to request an absentee ballot, visit [mnvotes.org](http://mnvotes.org).

### 2022 DATES

#### VOTE EARLY

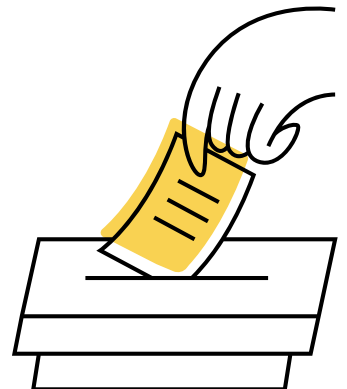
- Vote by mail or in person  
September 23 through  
November 7.

#### ELECTION DAY

- Tuesday,  
November 8

#### LETTER FOR YOUR EMPLOYER:

<https://www.sos.state.mn.us/media/3111/letter-to-employers-from-secretary-simon.pdf>



#### More Information:

<https://dfl.org/voterprotection/> | <https://mnvotes.gov> | <https://iwillvote.com/>

1-833-DFL-VOTE